



Noise Monitoring Result

Day Time (0700 - 1900hrs on normal weekdays)

Location: M1a - Harbour Road Sports Centre

Date	Time	Weather	Measurement Noise Level			Baseline Level	Construction Noise Level	Limit Level
			Leq	L10	L90	Leq	Leq	Leq
Unit: dB(A), (30-min)								
01/06/15	14:31	Cloudy	72.4	75.0	67.5	72	59	75
10/06/15	9:50	Fine	75.3	77.5	71.0	72	72	75
15/06/15	14:04	Fine	72.4	74.5	68.5	72	59	75
24/06/15	13:29	Cloudy	72.6	75.0	69.0	72	62	75

Location: M2b - Noon-day gun area

Date	Time	Weather	Measurement Noise Level			Baseline Level	Construction Noise Level	Limit Level
			Leq	L10	L90	Leq	Leq	Leq
Unit: dB(A), (30-min)								
01/06/15	15:15	Cloudy	67.6	68.5	65.5	68	68	75
10/06/15	10:32	Fine	67.1	68.5	65.5	68	67	75
15/06/15	14:40	Fine	68.8	69.5	65.0	68	63	75
24/06/15	14:15	Cloudy	69.5	71.8	65.5	68	65	75

Location: M3a - Tung Lo Wan Fire Station

Date	Time	Weather	Measurement Noise Level			Baseline Level	Construction Noise Level	Limit Level
			Leq	L10	L90	Leq	Leq	Leq
Unit: dB(A), (30-min)								
02/06/15	8:05	Fine	62.3	63.5	59.8	69	62	75
09/06/15	13:31	Fine	64.8	66.0	62.5	69	65	75
16/06/15	8:30	Fine	65.3	67.5	63.0	69	65	75
23/06/15	8:00	Cloudy	67.5	68.5	66.5	69	68	75

Location: M4b - Victoria Centre

Date	Time	Weather	Measurement Noise Level			Baseline Noise Level	Construction Noise Level	Limit Level
			Leq	L10	L90	Leq	Leq	Leq
Unit: dB(A), (30min)								
02/06/15	8:40	Fine	68.9	71.2	66.7	67	64	75
09/06/15	14:11	Fine	65.2	66.0	63.0	67	65	75
16/06/15	9:19	Fine	64.5	65.5	62.5	67	65	75
23/06/15	8:39	Cloudy	68.2	68.9	66.3	67	61	75

Location: M5b - City Garden

Date	Time	Weather	Measurement Noise Level			Baseline Level	Construction Noise Level	Limit Level
			Leq	L10	L90	Leq	Leq	Leq
Unit: dB(A), (30min)								
05/06/15	10:00	Fine	68.4	70.0	66.5	68	58	75
09/06/15	14:54	Fine	68.5	70.0	66.0	68	59	75
16/06/15	10:00	Fine	66.8	67.5	65.5	68	67	75
23/06/15	9:55	Cloudy	69.0	69.2	67.0	68	62	75

Location: M6 - HK Baptist Church Henrietta Secondary School

Date	Time	Weather	Measurement Noise Level			Baseline Level	Construction Noise Level	Limit Level
			Leq	L10	L90	Leq	Leq	Leq
Unit: dB(A), (30-min)								
05/06/15	10:35	Fine	68.0	69.0	66.0	71	68	65
09/06/15	15:35	Fine	68.1	69.5	65.5	71	68	65
16/06/15	10:40	Fine	67.5	68.5	65.0	71	68	65
23/06/15	10:30	Cloudy	70.9	72.0	69.0	71	57	65



Noise Monitoring Result

Day Time (0700 - 1900hrs on normal weekdays)

Location: M7e - International Finance Centre (Eastern End of Podium) (Reference Station)

Date	Time	Weather	Measurement Noise Level			Baseline Level	Construction Noise Level	Limit Level
			Leq	L10	L90	Leq	Leq	Leq
Unit: dB(A), (30-min)								
02/06/15	13:35	Fine	68.4	69.5	66.5	67	63	N/A
09/06/15	9:12	Fine	68.1	69.5	65.0	67	62	N/A
16/06/15	13:25	Fine	67.2	69.0	63.5	67	57	N/A
23/06/15	13:37	Cloudy	64.0	65.5	61.0	67	64	N/A

Location: M7w - International Finance Centre (Western End of Podium)

Date	Time	Weather	Measurement Noise Level			Baseline Level	Construction Noise Level	Limit Level
			Leq	L10	L90	Leq	Leq	Leq
Unit: dB(A), (30-min)								
02/06/15	14:13	Fine	67.1	69.0	63.5	69	67	75
09/06/15	10:20	Fine	67.0	68.0	65.5	69	67	75
16/06/15	14:00	Fine	65.2	65.5	63.5	69	65	75
23/06/15	14:10	Cloudy	69.7	71.5	66.0	69	58	75

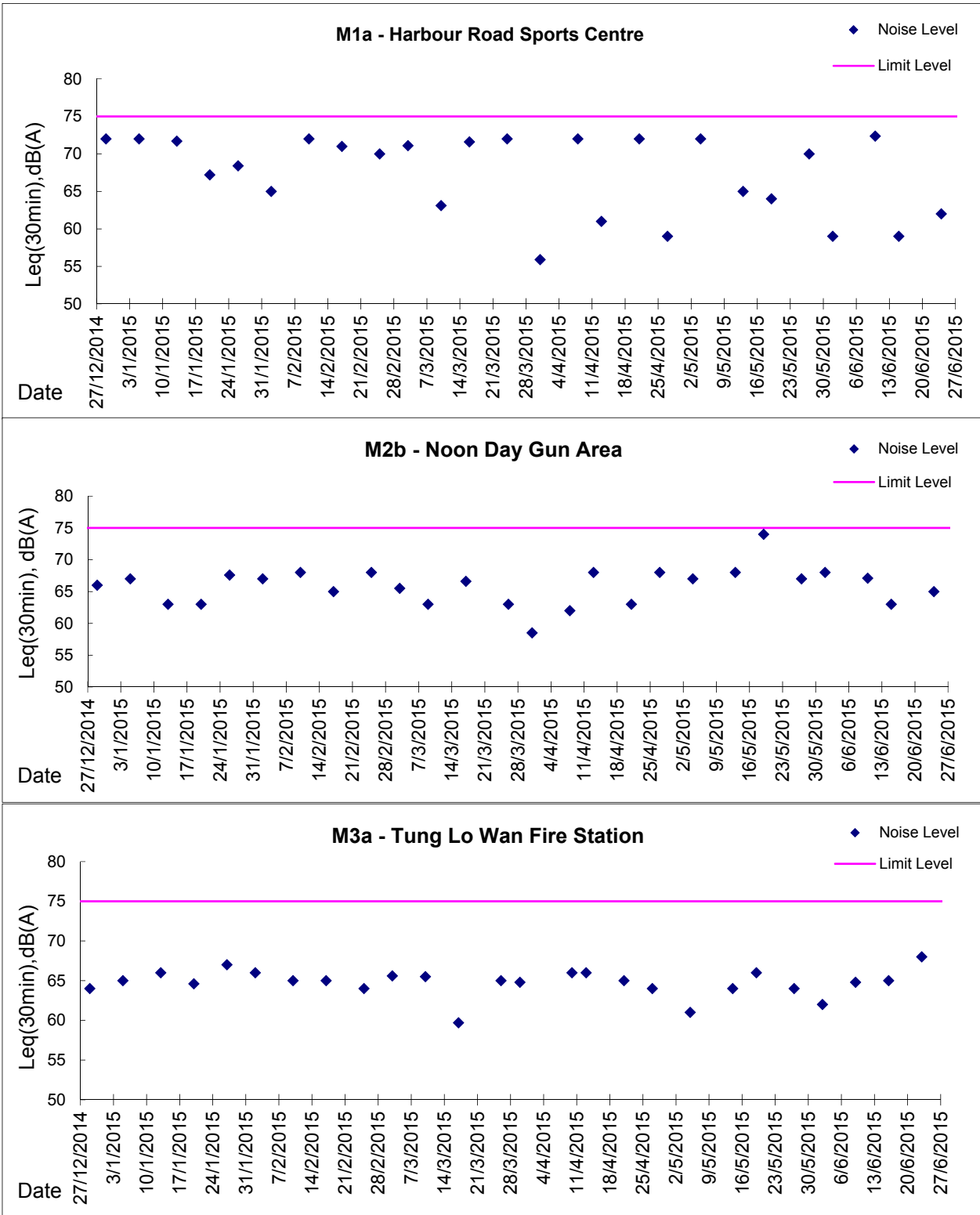
Location: M8 - City Hall

Date	Time	Weather	Measurement Noise Level			Baseline Level	Construction Noise Level	Limit Level
			Leq	L10	L90	Leq	Leq	Leq
Unit: dB(A), (30-min)								
01/06/15	13:45	Cloudy	59.7	61.5	57.0	64	60	70
09/06/15	11:11	Fine	60.4	60.5	56.0	64	60	70
15/06/15	13:15	Fine	63.0	65.0	56.5	64	63	70
23/06/15	15:00	Cloudy	60.5	62.5	56.5	64	61	70



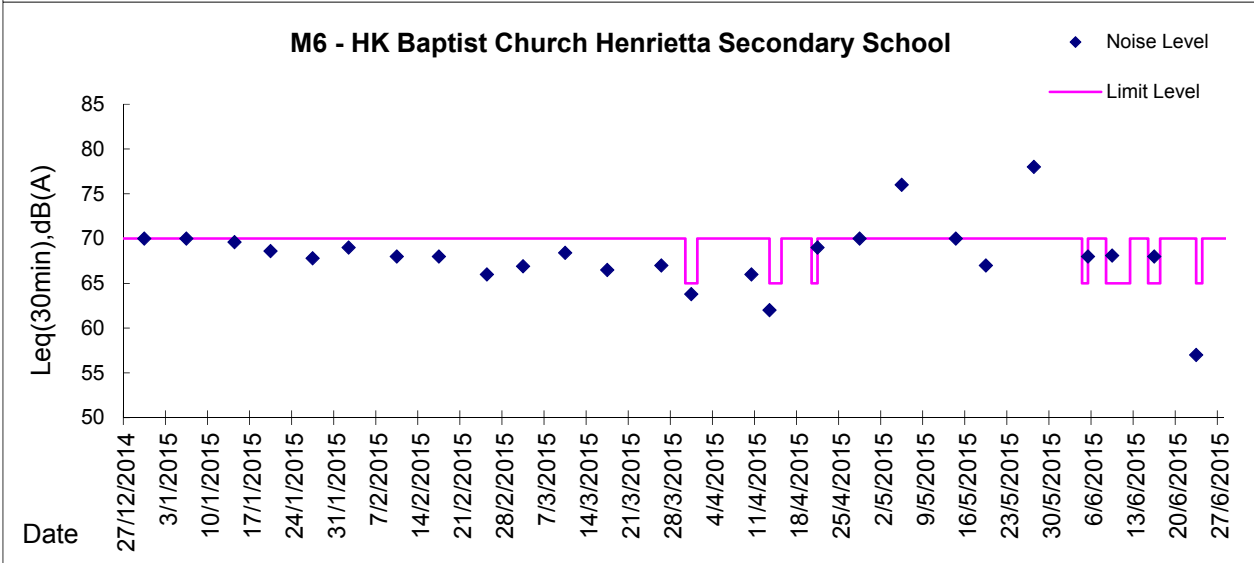
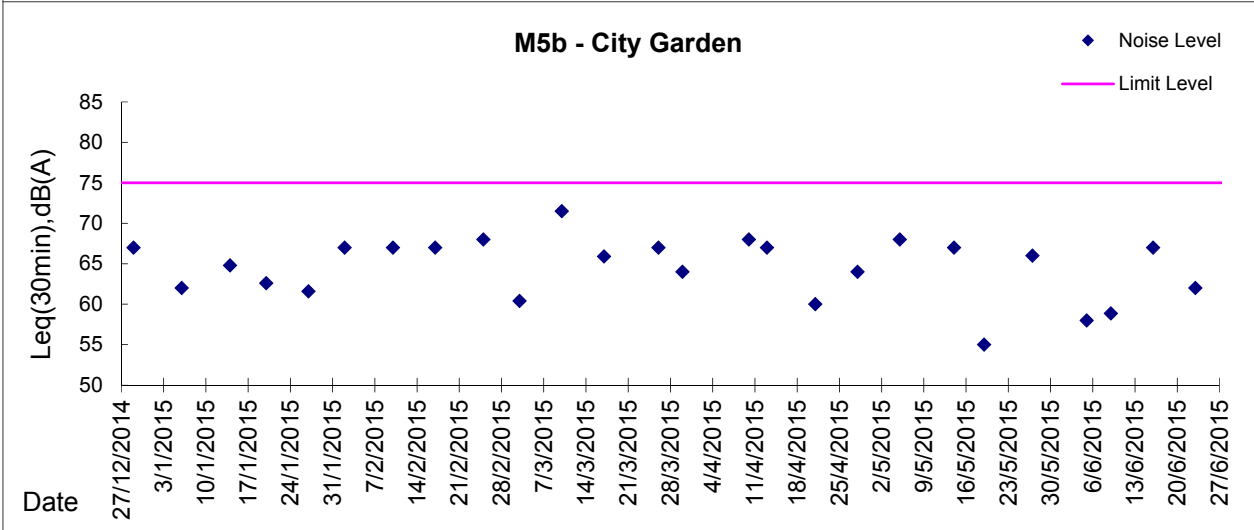
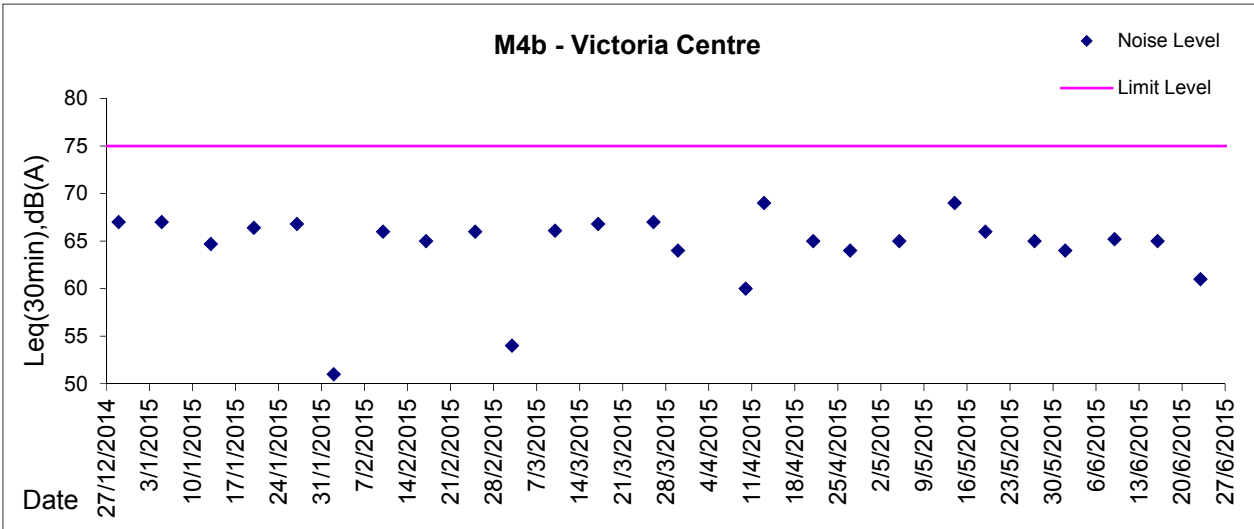
Graphic Presentation of Noise Monitoring Result

Day Time (0700 - 1900hrs on normal weekdays)





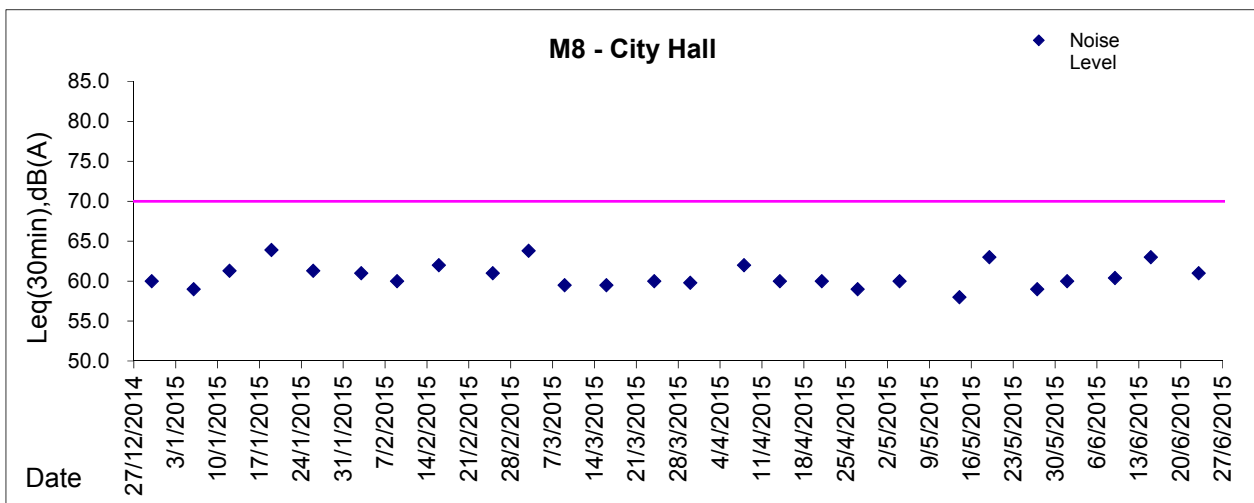
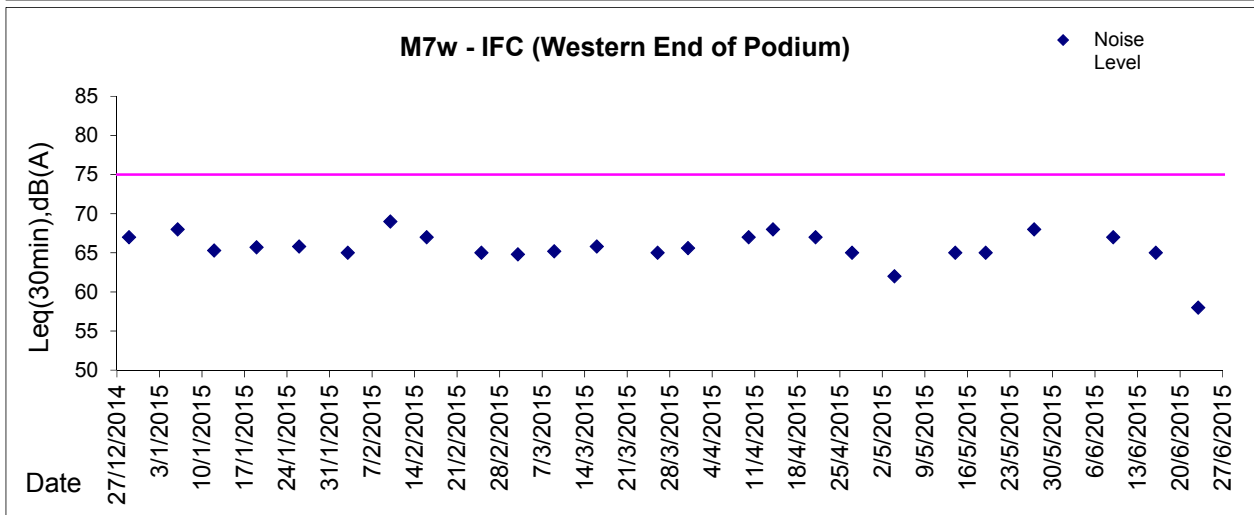
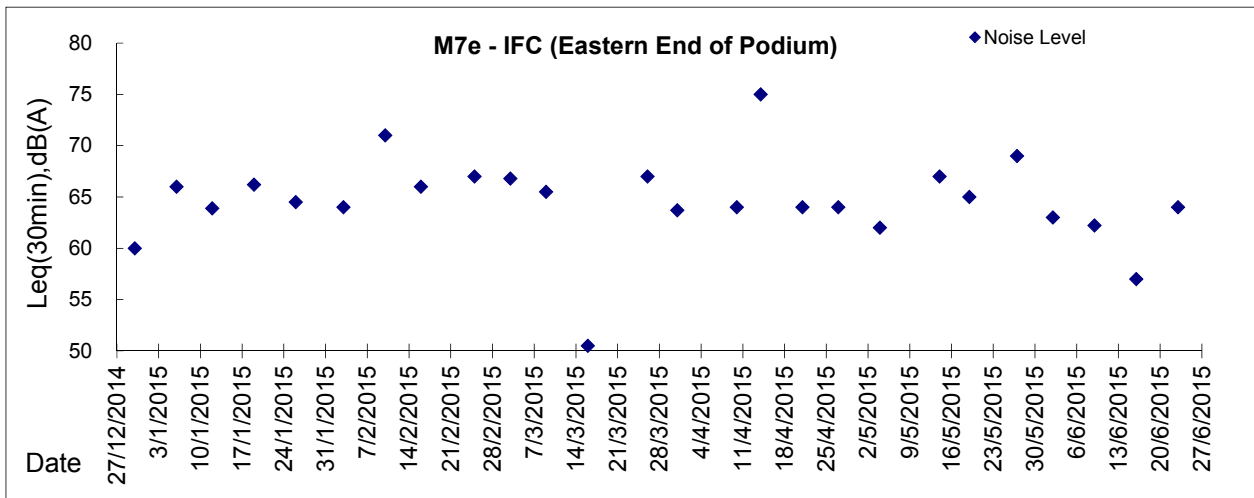
Graphic Presentation of Noise Monitoring Result
Day Time (0700 - 1900hrs on normal weekdays)





Graphic Presentation of Noise Monitoring Result

Day Time (0700 - 1900hrs on normal weekdays)



* Remark: M7e - IFC (Eastern End of Podium) is a reference monitoring station